

## 2/2- or 3/2-way- Rocker Solenoid Valve



Type 6128 can be combined with...



### Type 2507

Cable Plug

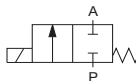
- Direct acting
- Hermetic isolation of fluid
- Vacuum to 10 bar<sup>1)</sup>
- Orifice 2 or 3 mm
- Manual override as standard
- Sub-base and threaded port version
- 22 mm width per station

### Note

This Type will be replaced by 6628 in 2013

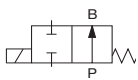
The 6128 analytical solenoid valve combines all state of the art features in a compact design. With high reliability, virtually no heat transfer between fluid and coil, low internal volume and Burkert's expertise in supplying customized solutions, these valves are a perfect fit even for the most demanding applications.

#### Circuit function A



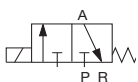
2/2-way valve,  
direct acting,  
normally closed

#### Circuit function B



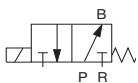
2/2-way valve,  
direct acting,  
normally open

#### Circuit function C



3/2-way valve,  
direct acting, when  
de-energised Port A  
exhausted

#### Circuit function D



3/2-way valve,  
direct acting, when  
de-energised Port B  
pressurised

### Technical data

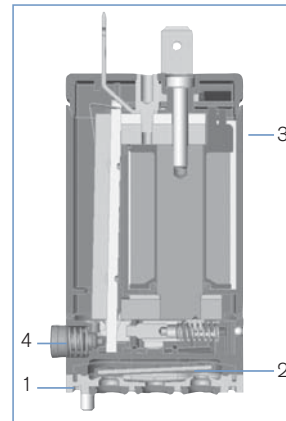
<b>Body material</b>	G, NPT connection subbase connection	PEEK and PPS PPS
<b>Seal material</b>		EPDM or FKM
<b>Medium</b>		Resistant to neutral and slightly aggressive fluids (see chemical resistance chart); technical vacuum
<b>Medium temperature</b>		0 °C ... +70 °C
<b>Ambient temperature</b>		0 °C ... +60 °C
<b>Viscosity</b>		max. 21 mm <sup>2</sup> /s
<b>Port connection</b>		Sub-base G 1/8 NPT 1/8 on request
<b>Operating voltages</b>		24 V DC, 230 V / 50 Hz Other voltages on request
<b>Voltage tolerance</b>		± 10%
<b>Power consumption</b>		5 W
<b>Duty cycle</b>		100 % continuous rating
<b>Electrical connection</b>		▪ Acc. to Form B industrial standard for cable plug Type 2507 ▪ Rectangular plug ▪ 500mm leads on request
<b>Manual override</b>		Standard
<b>Installation</b>		As required, preferably with actuator upright
<b>Protection class</b>		IP40

<sup>1)</sup> Pressure values [bar]: Measured as overpressure to the atmospheric pressure

## Response times

Circuit function	Orifice DN [mm]	Kv value water [m³/h]	QNn-value air [l/min]	Pressure range [bar]	Response times		Max. pressure difference [bar]
					opening [ms]	closing [ms]	
A	2	0,1	104	Vacu-10	18	8	10
	3	0,13	136	Vacu-3	18	8	3
B	2	0,1	104	Vacu-10	18	8	10
	3	0,13	136	Vacu-3	18	8	3
C	2	0,1	104	Vacu-10	18	8	10
	3	0,13	136	Vacu-3	18	8	3
D	2	0,1	104w	Vacu-10	18	8	10
	3	0,13	136	Vacu-3	18	8	3

- Kv value [m³/h]: Flow rate for water,  
Measured at +20 °C, 1 bar<sup>1)</sup> pressure difference
- Response times [ms]:  
Measured at valve outlet at 3 bar<sup>1)</sup> and +20°C according to ISO 12238.  
Opening Pressure rise from 0...10%  
Closing Pressure drop from 100...90%

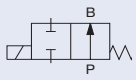
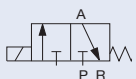
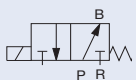


1. Valve body, PEEK / PPS
2. Diaphragm, EPDM or FKM
3. Coil body, PA
4. Manual override, PA

## Ordering chart

Circuit function	Orifice DN [mm]	Body material	Seal material	Voltage/ frequency [V/ Hz]	Port connection	Electrical connection	Item no.
A 	2.0	PPS	FKM	24 V/DC	Sub-base	Rectangular plug	160 758
						Tag connector Form B	160 759
		PEEK/ PPS	G 1/8	Rectangular plug	160 760		
				Tag connector Form B	160 761		
		PPS	EPDM	24 V/DC	Sub-base	Rectangular plug	160 763
						Tag connector Form B	160 764
	PEEK/ PPS	G 1/8	Rectangular plug	160 765			
			Tag connector Form B	160 766			
	3.0	PPS	FKM	24 V/DC	Sub-base	Rectangular plug	160 767
						Tag connector Form B	160 768
		PEEK/ PPS	G 1/8	Rectangular plug	160 769		
				Tag connector Form B	160 770		
PPS		EPDM	24 V/DC	Sub-base	Rectangular plug	160 771	
					Tag connector Form B	160 772	
PEEK/ PPS	G 1/8	Rectangular plug	160 773				
		Tag connector Form B	160 774				
B 	2.0	PPS	FKM	24 V/DC	Sub-base	Rectangular plug	160 775
						Tag connector Form B	160 776
	PEEK/ PPS	G 1/8	Rectangular plug	160 777			
			Tag connector Form B	160 778			
	PPS	EPDM	24 V/DC	Sub-base	Rectangular plug	160 779	
					Tag connector Form B	160 780	
PEEK/ PPS	G 1/8	Rectangular plug	160 781				
		Tag connector Form B	160 782				

## Ordering chart (continued)

Circuit function	Orifice DN [mm]	Body material	Seal Material	Voltage/frequency [V/Hz]	Port Connection	Electrical connection	Item no.	
B 	2.0	PPS	EPDM	24 V/DC	Sub-base	Rectangular plug	160 782	
						Tag connector Form B	160 783	
					G 1/8	Rectangular plug	160 784	
		Tag connector Form B	160 785					
		230 V/50 Hz	PEEK/PPS	G 1/8	Tag connector Form B	160 786		
					Tag connector Form B	160 787		
	3.0	PPS	FKM	24 V/DC	Sub-base	Rectangular plug	160 788	
						Tag connector Form B	160 789	
					G 1/8	Rectangular plug	160 790	
		Tag connector Form B	160 791					
		230 V/50 Hz	PEEK/PPS	G 1/8	Tag connector Form B	160 792		
					Tag connector Form B	160 793		
PPS	EPDM	24 V/DC	Sub-base	Rectangular plug	160 794			
				Tag connector Form B	160 795			
			G 1/8	Rectangular plug	160 796			
	Tag connector Form B	160 797						
	C 	2.0	PPS	FKM	24 V/DC	Sub-base	Rectangular plug	160 797
							Tag connector Form B	150 790
G 1/8						Rectangular plug	160 798	
			Tag connector Form B	160 799				
230 V/50 Hz			PEEK/PPS	G 1/8	Tag connector Form B	160 800		
					Tag connector Form B	160 801		
3.0		PPS	FKM	24 V/DC	Sub-base	Rectangular plug	160 802	
						Tag connector Form B	160 803	
					G 1/8	Rectangular plug	160 804	
		Tag connector Form B	160 805					
		230 V/50 Hz	PEEK/PPS	G 1/8	Tag connector Form B	160 806		
					Tag connector Form B	160 807		
PPS	EPDM	24 V/DC	Sub-base	Rectangular plug	160 808			
				Tag connector Form B	160 809			
			G 1/8	Rectangular plug	160 810			
	Tag connector Form B	160 811						
	230 V/50 Hz	PEEK/PPS	G 1/8	Tag connector Form B	160 812			
				Tag connector Form B	160 813			
D 	2.0	PPS	FKM	24 V/DC	Sub-base	Rectangular plug	160 813	
						Tag connector Form B	150 080	
					G 1/8	Rectangular plug	160 814	
		Tag connector Form B	160 815					
		230 V/50 Hz	PEEK/PPS	G 1/8	Tag connector Form B	160 816		
					Tag connector Form B	160 817		
	3.0	PPS	FKM	24 V/DC	Sub-base	Rectangular plug	160 818	
						Tag connector Form B	160 819	
					G 1/8	Rectangular plug	160 820	
		Tag connector Form B	160 821					
		230 V/50 Hz	PEEK/PPS	G 1/8	Tag connector Form B	160 822		
					Tag connector Form B	160 823		
PPS	EPDM	24 V/DC	Sub-base	Rectangular plug	160 824			
				Tag connector Form B	160 825			
			G 1/8	Rectangular plug	160 826			
	Tag connector Form B	160 827						
	230 V/50 Hz	PEEK/PPS	G 1/8	Tag connector Form B	160 828			
				Tag connector Form B	160 828			

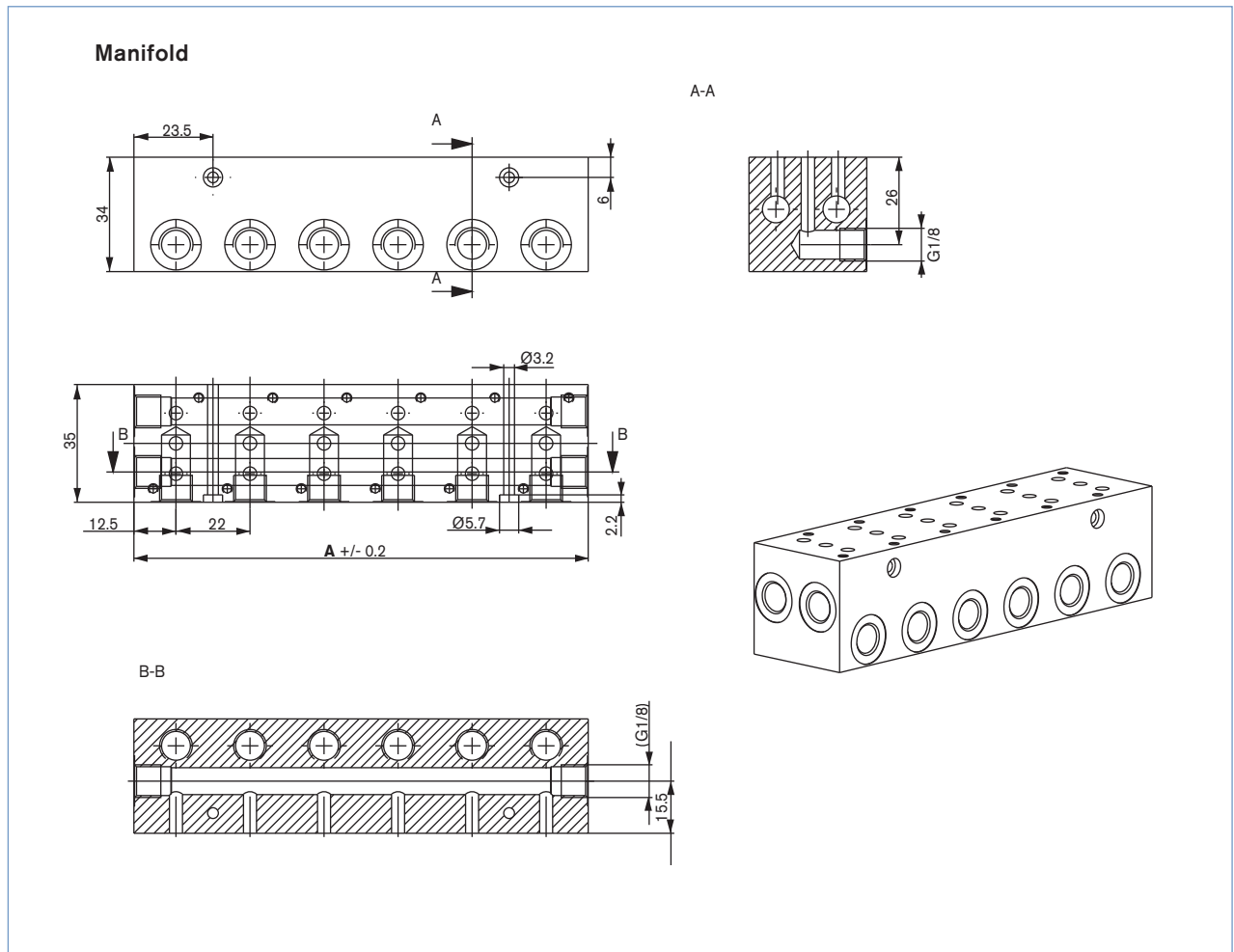
- Rectangular plug supplied **without** cable plug (see ordering chart for accessories).
- Manual override as standard.
- Other versions on request.

## Ordering chart for manifold

Multiple Manifolds with individual service port (G1/8) and diverter function on 2 common channels (G1/8);  
Delivery without valves; Material: anodized aluminium


Manifold	A [mm]	Item no.
2-fold	47	669 571
3-fold	69	672 633
4-fold	91	669 572
5-fold	113	672 661
6-fold	135	669 570
10-fold	223	672 660

▪ Other versions on request.



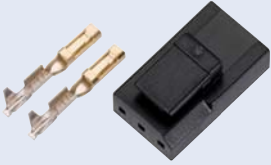


## Ordering chart for accessories

### Cable Plug Type 2507 according to Industrial standard Form B

	Accessories	Version	Voltage	Item no.
	Cable Plug Type 2507	without Circuitry	0 ... 250 V AC/DC	423 845
		with LED	24 V AC/DC	423 849

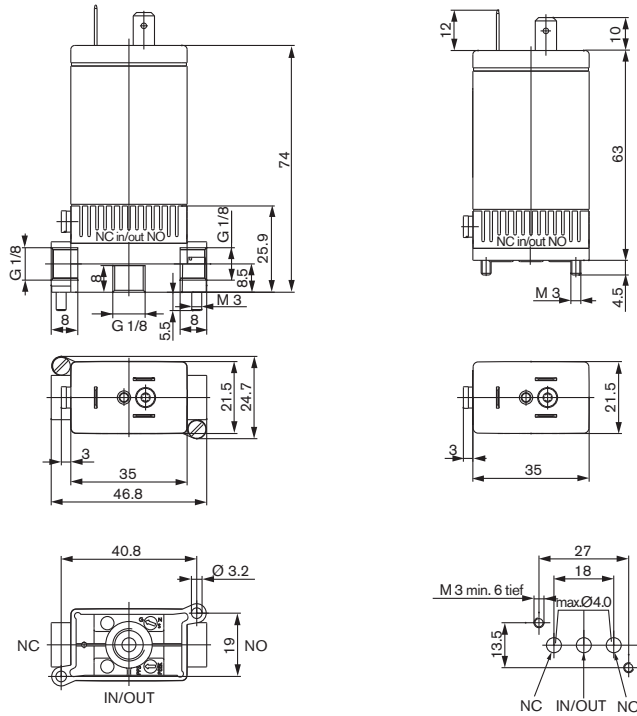
### Rectangular plug Type 2505

	Accessories	Item no.
	with 3m cable	133 486
	with 300mm leads	644 068
	Single contact for individual mounting	644 067

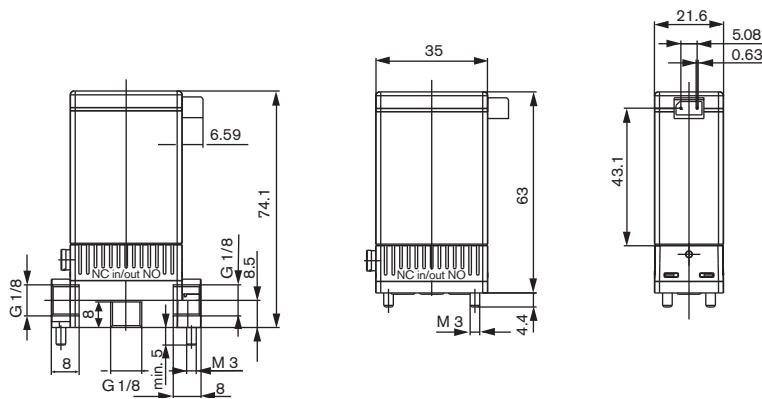
## Dimensions [mm]

## Valves with tag connector Form B - Industrial standard

(The middle connection is not applicable in the case of the 2/2-way version)

Threaded port body G1/8 manifold mounting  
(2xM3 screws)Flange interface for manifold mounting  
(2xM3 screws)

## Valves with rectangular plug



To find your nearest Bürkert facility, click on the orange box →

[www.burkert.com](http://www.burkert.com)In case of special application conditions,  
please consult for advice.Subject to alteration.  
© Christian Bürkert GmbH & Co. KG

1304/9\_EU-en\_00891862